

Electrical characteristics at Standard Test Conditions (STC)

Module	QSAR II 270-60M	QSAR II 265-60M	QSAR II 260-60M	QSAR II 255-60M
Maximum Power - P _{mp} (W)	270	265	260	255
Positive power tolerance	0~3%	0~3%	0~3%	0~3%
Open Circuit Voltage - V _{oc} (V)	38.3	38.2	38.1	38.0
Short Circuit Current - I _{sc} (A)	9.07	8.98	8.90	8.82
Maximum Power Voltage - V _{mp} (V)	31.2	31.0	30.8	30.7
Maximum Power Current - I _{mp} (A)	8.65	8.55	8.44	8.30
Module Efficiency	16.63%	16.32%	16.01%	15.70%

Electrical data relates to standard test conditions (STC): irradiance 1000 W/m²; AM 1.5; cell temperature 25°C measuring uncertainty of power is within ±3%. Certified in accordance with IEC61215, IEC61730-1/2 and UL 1703.

Electrical Characteristics at Normal Operating Cell Temperature (NOCT)

Module	QSAR II 270-60M	QSAR II 265-60M	QSAR II 260-60M	QSAR II 255-60M
Maximum Power - P _{mp} (W)	198	195	192	188
Maximum Power Voltage - V _{mp} (V)	28.8	28.6	28.4	28.1
Maximum Power Current - I _{mp} (A)	6.88	6.82	6.76	6.68
Open Circuit Voltage - V _{oc} (V)	35.3	35.2	35.1	35
Short Circuit Current - I _{sc} (A)	7.36	7.28	7.19	7.12

Electrical data relates to normal operating cell temperature (NOCT): irradiance 800 W/m²; wind speed 1 m/s; cell temperature 45°C; ambient temperature 20°C measuring uncertainty of power is within ±3%

Temperature Characteristics

Voltage Temperature Coefficient	-0.307%/K
Current Temperature Coefficient	+0.039%/K
Power Temperature Coefficient	-0.423%/K

Maximum Ratings

Maximum system voltage (V)	1000
Series fuse rating (A)	20
Reverse current overload (A)	27

Mechanical Characteristics

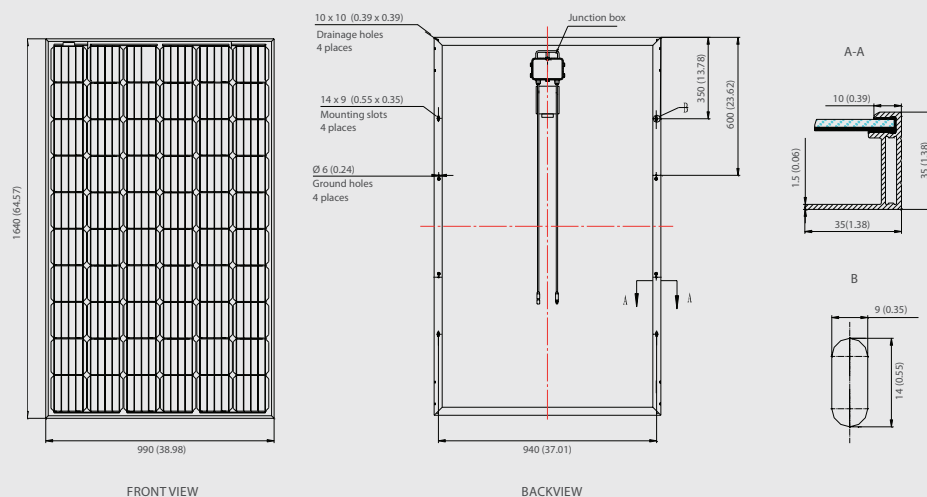
Dimensions	1640 × 990 × 35 mm
Weight	18.3 kg
Frame	Anodized aluminum profile
Front glass	White toughened safety glass, 3.2 mm
Cell Encapsulation	EVA (Ethylene-Vinyl-Acetate)
Back Sheet	Composite film
Cells	6 × 10 pieces monocrystalline solar cells series strings (156 mm × 156 mm)
Junction Box	Rated current ≥ 12A, IP ≥ 65, TUV & UL
Cable	Length 900 mm, 1 × 4 mm ²
Connector	MC 4/ compatible with MC 4

System Design

Temp. range	-40°C to + 85°C
Hail	max. diameter of 25mm with 23m/s impact speed
Max. capacity	Snow 5400 Pa, wind 2400 Pa
Application class	A
Safety class	II

Dimensions

Note: Module layout below only valid for modules with 35mm thickness. All dimensions in mm (inch).



IV-Curves

